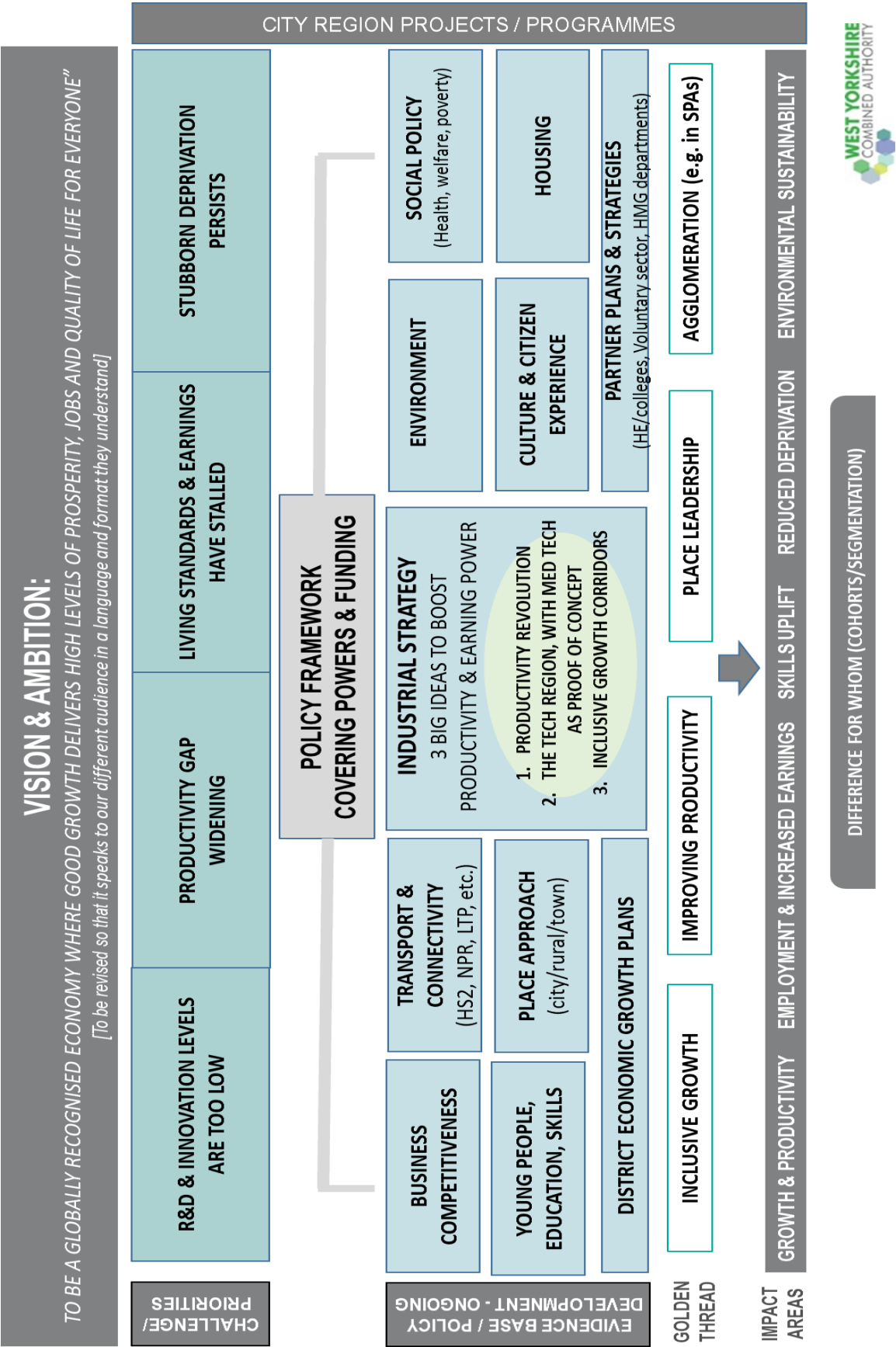


Leeds City Region Strategic Framework



## Mapping the Industrial Strategy to our current Strategic Framework

Following the publication of the national Industrial Strategy White Paper, a light touch review of the headline priorities of the SEP and associated delivery plans / strategies, mapped against the overarching priorities of the Industrial Strategy's 'five foundations of productivity' was undertaken. The review looked at LCR's existing funding streams and the potential for new funding opportunities as outlined within the Industrial Strategy.

Key messages emerging from the headline review include:

- At a strategic level, the SEP's headline priorities have a strong fit with the overarching objectives of the national Industrial Strategy, and broadly align to the policy areas depicted in the diagram above. These priorities are supported by funding objectives outlined in the LCR ESIF strategy and the priorities of the LCR Growth Deal submission.
- LCR currently has well developed plans in place in relation to employment and skills, transport, the environment (including green infrastructure and flooding), and aspects of business engagement activity (such as trade and investment). There are clear opportunities for further development of policy in these areas (focused on delivery), building on a strong track record and aligned with the Industrial Strategy.
- Building upon LCR's engagement with universities (including on ESIF projects such as Access Innovation), and involvement with Science and Innovation Audits (SIA) provides scope for further development in this area. Innovation policy development aligned to key sector strengths in LCR (particularly Med-tech and Agri-Tech) is a clear opportunity.
- Further development on delivery plans and priorities is also needed in relation to, housing, digital, connectivity, spatial priority areas/integrated infrastructure, and culture. Culture in particular has a role in the foundation of 'place' within the national Industrial Strategy, providing a clear basis for development of a LCR approach.
- The Government's recently published 'Social Mobility Strategy' makes the link between educational attainment and imbalances in regional inequality as one of the key drivers of productivity variation across the country. Educational attainment and school standards is not currently embedded within the SEP objectives or LCR delivery plans, with priorities currently focused on enterprise and business engagement in schools. Further work with partners will be required to develop this policy area linking to the inclusive growth agenda.
- Social policy (including health and welfare) is a new area of policy for LCR and not reflected in current plans and strategies. Building upon existing approaches to inclusive labour market activities such as those supported in the ESIF strategy, has strong potential to deliver against an inclusive growth agenda, in particular with a focus on early intervention and prevention.
- LCR's existing energy activities provide a platform for further policy development in clean energy, the Government's Clean Growth Strategy provides an excellent national framework to shape local delivery.