

Item 5 Appendix 3

Rail Performance Summary Graphs

The graphs below provide a summary of performance by rail reporting in a way that allows performance to be compared with previous years. The Cancelled and Significantly Late (CaSL) and Short Formed figures are for 2018 onwards only.

Rail Period Dates

The rail industry reports performance and other data on the basis of a 13-period year. This year and last the rail periods are as follows:

Rail period	2018 / 19	2019 / 20
Period 1	1 April – 28 April	1 April – 27 April
Period 2	29 April – 26 May	28 April – 25 May
Period 3	27 May – 23 June	26 May – 22 June
Period 4	24 June – 21 July	23 June – 20 July
Period 5	22 July – 18 August	21 July – 17 August
Period 6	19 August – 15 September	18 August – 14 September
Period 7	16 September – 13 October	15 September – 12 October
Period 8	14 October – 10 November	13 October – 9 November
Period 9	11 November – 8 December	10 November – 7 December
Period 10	9 December – 5 January	8 December – 4 January
Period 11	6 January – 2 February	5 January – 1 February
Period 12	3 February – 2 March	2 February – 29 February
Period 13	3 March – 31 March	1 March – 31 March

Performance Terms

The Public Performance Measure (PPM) combines figures for punctuality and reliability into a single performance figure. For TransPennine Express it covers services arriving at their destination within 10 minutes of their planned arrival time and for Northern within 5 minutes of their planned arrival time.

Cancellations and Significant Lateness (CaSL) – the percentage of trains which are part or fully cancelled or arrive at their destination more than thirty minutes later than planned.

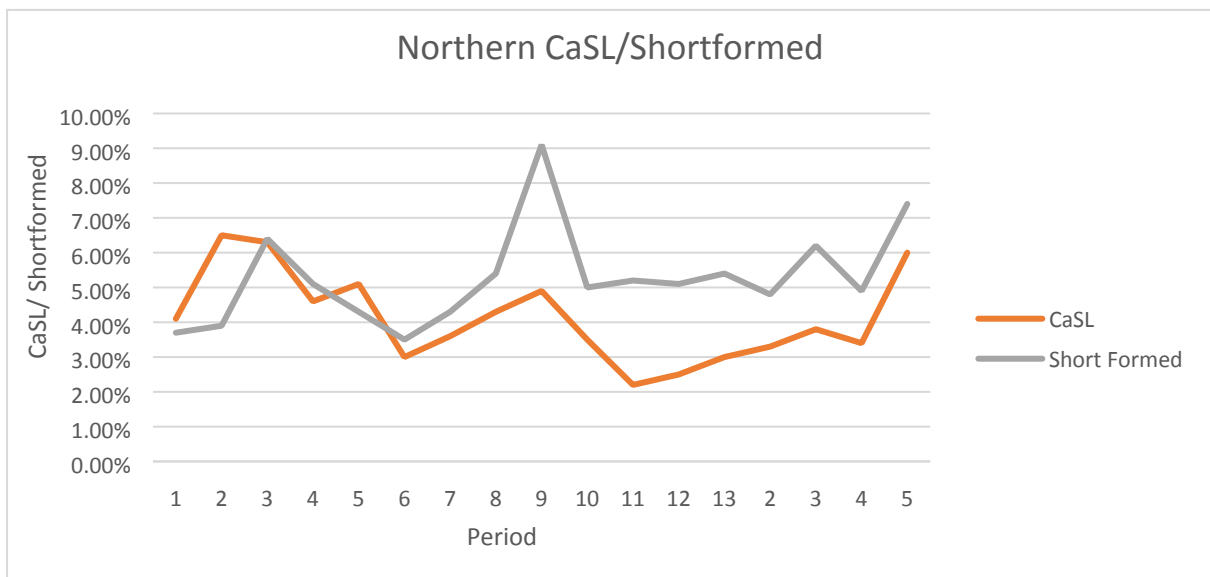
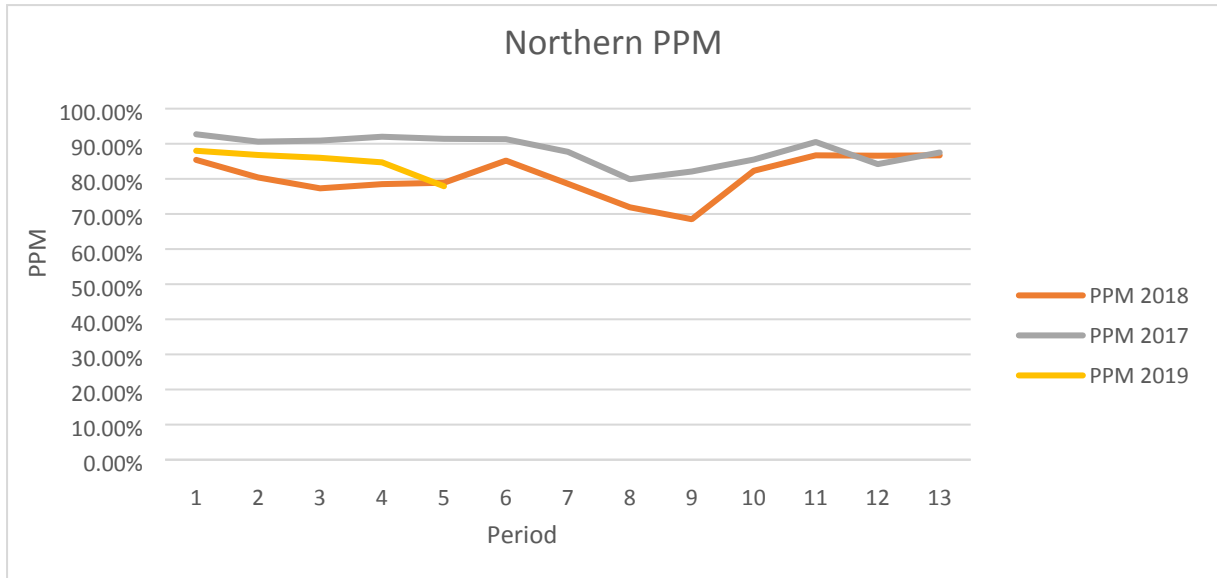
Short Formed – the percentage of trains which run with less than the planned capacity.

Northern

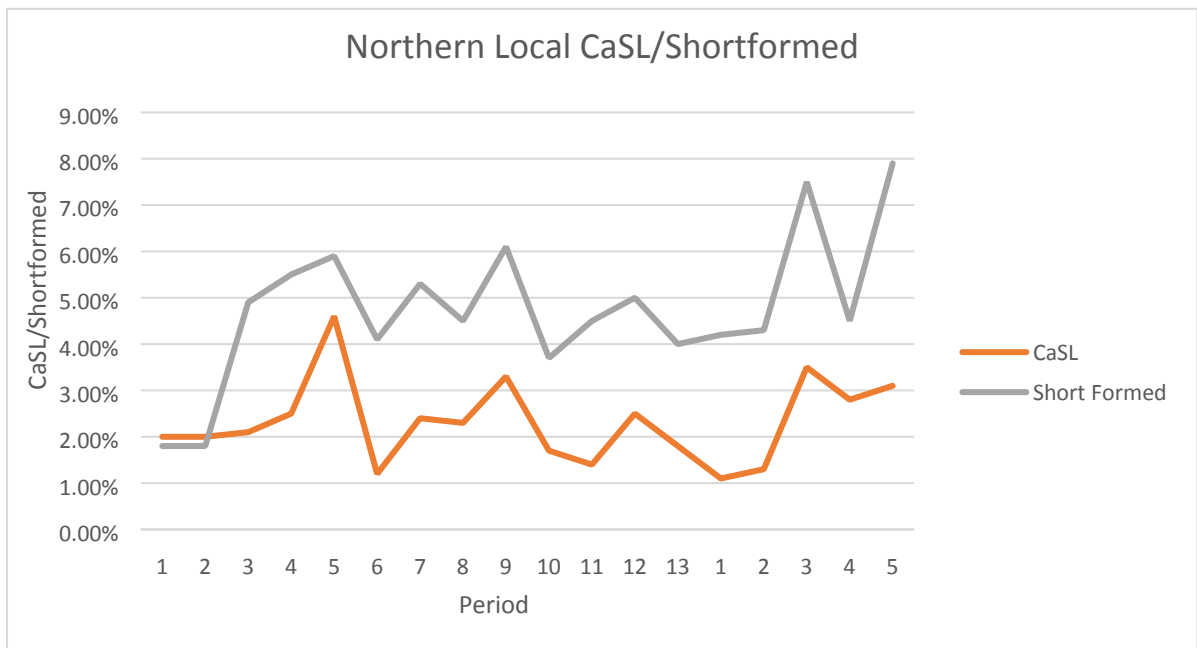
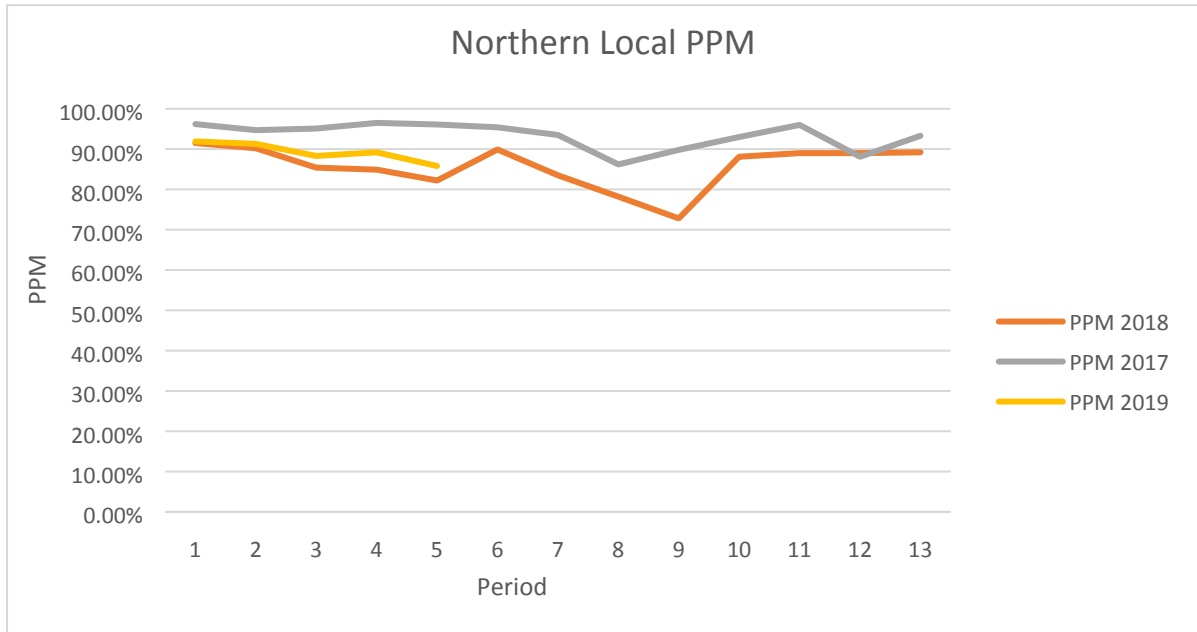
Target PPM: 84.8% (Period 5)

Target CaSL: 1.7% (Period 13)

Northern – All services across franchise



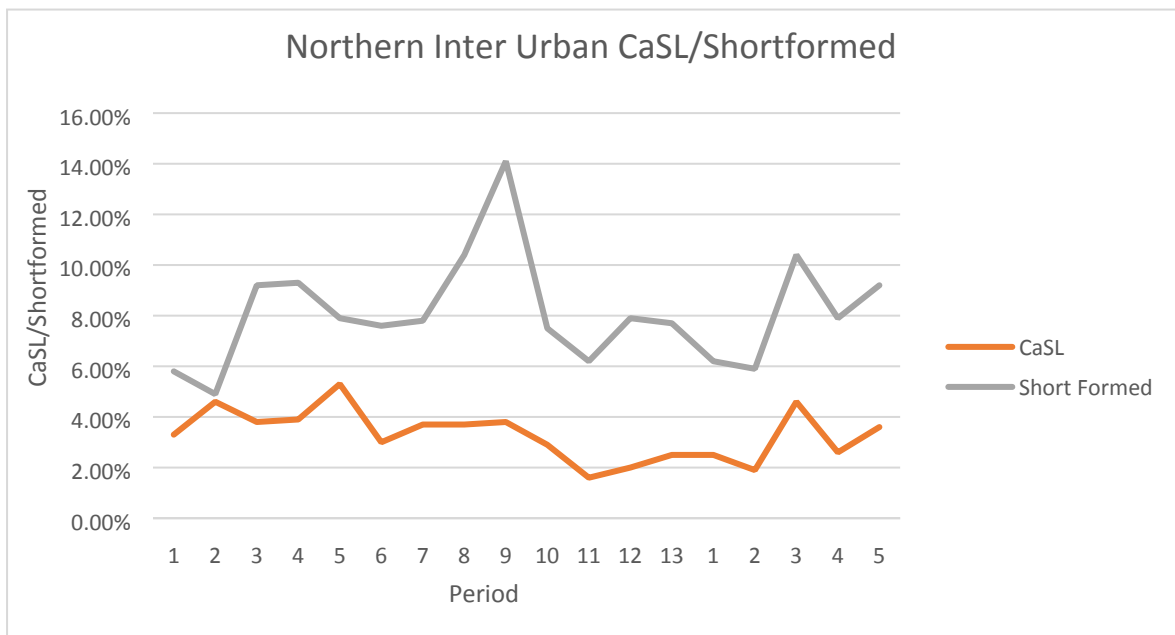
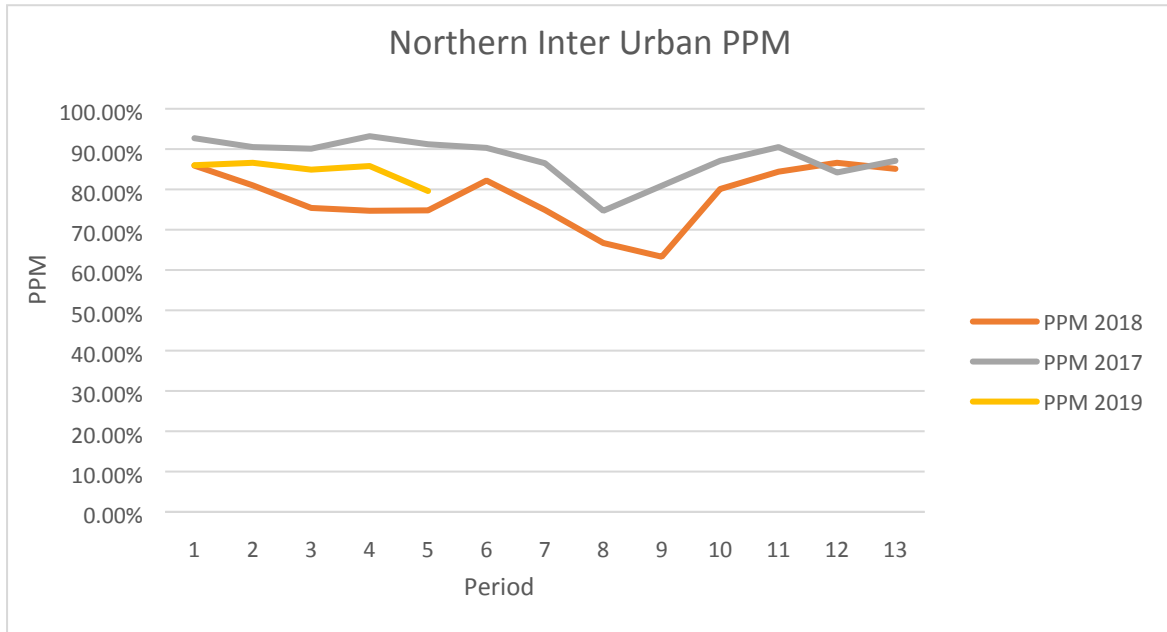
Northern – West and North Yorkshire – Local



Local

- Wakefield line route to Sheffield
- Airedale line – shorter routes
- Wharfedale line routes
- Pontefract line routes
- Southport-Leeds Calder Valley route

Northern – West and North Yorkshire – Inter Urban



Inter Urban

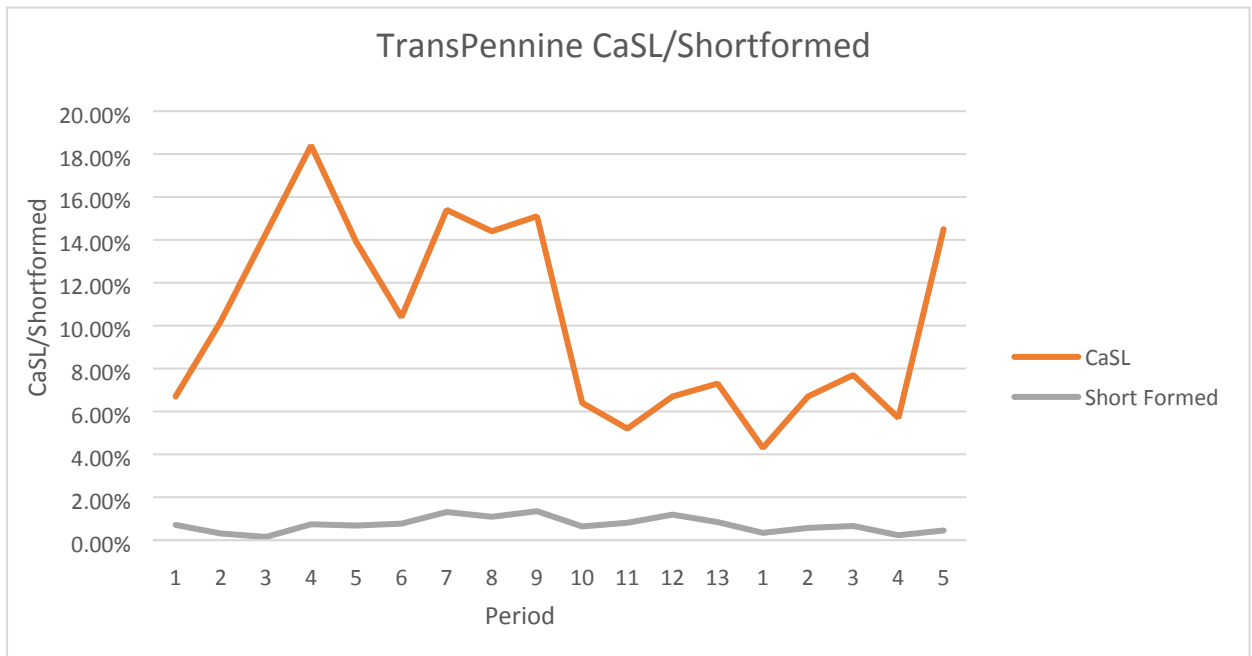
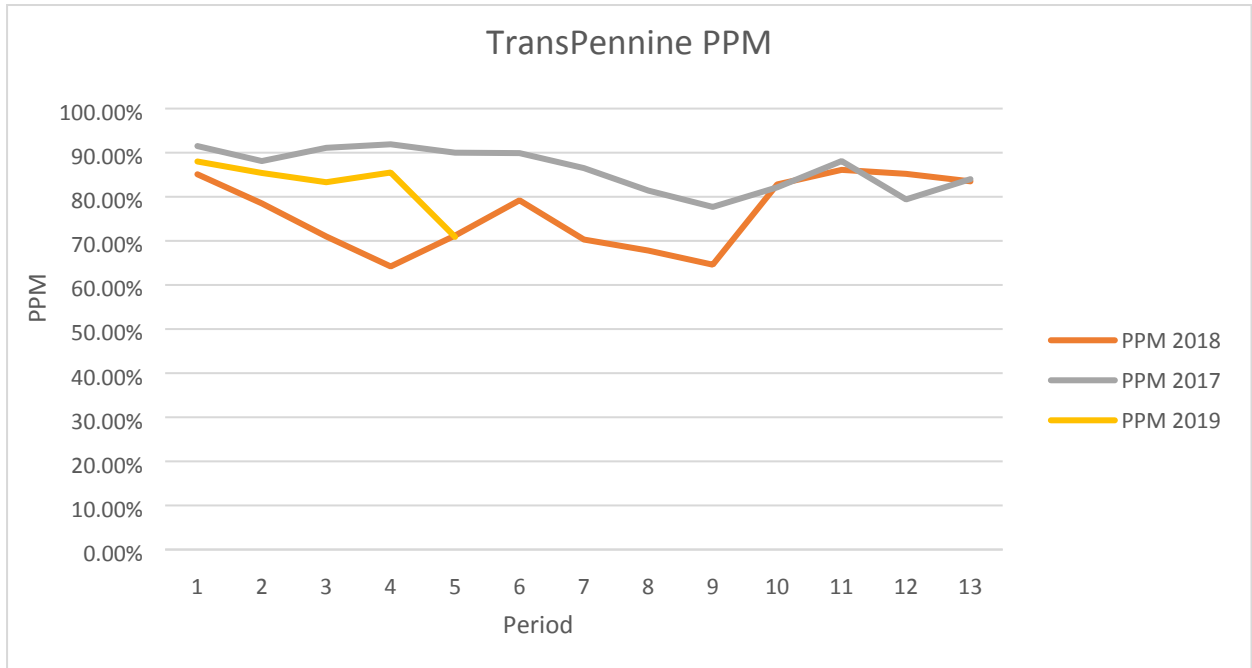
- All Calder Valley routes (except Southport-Leeds)
- Harrogate line routes
- York and Selby line routes
- Longer distance Airedale line routes
- Huddersfield line routes
- Wakefield line route to Doncaster

TransPennine Express

Target PPM: 87.7% (Period 5)

Target CaSL: 6.0% (Period 5)

TransPennine Express – All Routes



TransPennine Express – North Route

(Liverpool/Manchester/Manchester Airport to Hull, York, Scarborough, Middlesbrough and Newcastle).

